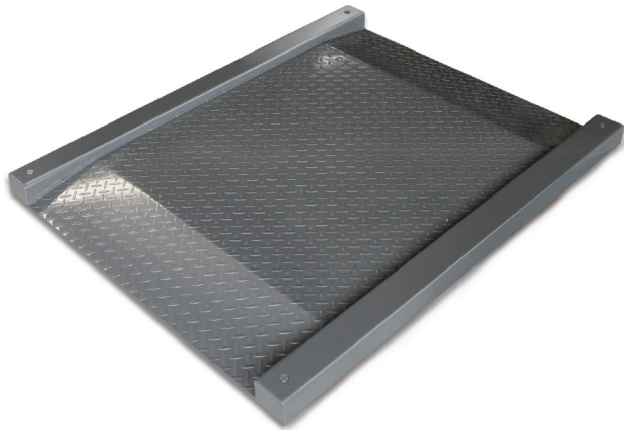


KERN KFD 600V20LM

KERN

Weighing bridge made of non-slip corrugated steel plate, lacquered



Category	
Brand	KERN
Product category	Component
Product group	Weighing bridge
Product family	KFD-V20-IP67

Measuring System	
Weighing capacity [Max]	600 kg
Readability [d]	200 g
Minimum weight [Min]	4 kg
Loadcell type	ZEMIC H8C 0.5 ton

Approval	
Verification scale interval [e]	200 g
Conformity assessment possible ex works	✓

Construction	
Dimensions weighing platform (W×D×H)	1800×1420×95 mm
Material weighing plate	steel, powder-coated
Material platform	steel, powder-coated
Dimensions weighing surface (W×D)	1200×1200 mm
Cable length	5 m
Display device cable length	5 m
Allowed cable length display device [Max]	30 m
Material load cell(s)	alloyed steel
Load cells - number	4

Functions	
IP protection - complete device	IP67 (load cell)

IP protection - load cell	IP67
IP protection - platform	IP67

Packing & Shipping	
Readability force [d] (N)	2 d
Dimensions packaging (W×D×H)	1400×1800×330 mm
Net weight	154 kg
Shipping method	Freight
Net weight approx.	155 kg
Gross weight approx.	195 kg
Shipping weight	192 kg

Services (optional)	
Article number for conformity assessment	965-230
Article number for DAkkS calibration	963-130

Pictograms

STANDARD



FACTORY

